



**SPO**  
CONSULTING  
Innovation • Unrestricted

## COMPANY PROFILE





**HEAD OFFICE**

Building 816/1 Ground Floor  
Hammets Crossing Office Park  
2 Selborne road  
Fourways, 2191

Tel: 087 550 0384  
Alt: 011 568 1540  
Fax: 086 600 2006  
Email: [info@spoconsulting.co.za](mailto:info@spoconsulting.co.za)  
Web: [www.spoconsulting.co.za](http://www.spoconsulting.co.za)

**TABLE OF CONTENT**

**PAGES**

1. Background.....	Pg 1.
2. Mission Statement.....	Pg 2.
3. Objectives.....	Pg 4.
4. Services.....	Pg 5.
5. Other Services.....	Pg 6.
6. Ownership.....	Pg 8.
7. Company Structure.....	Pg 9.
8. Company Affiliations.....	Pg 10.
9. Experience.....	Pg 11.
10. Conclusion.....	Pg 13.

*“It is not the beauty of a building you should look at, it's the construction of the foundation that will stand the test of time”*

*- David Allan Coe*





## 1. BACKGROUND

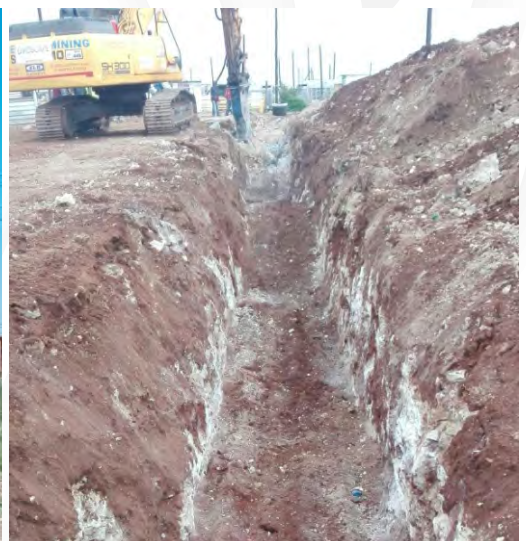
SPO Consulting is a 100% Black owned company, which is proudly South African and is motivated by its intention to provide high quality services and excellence.

SPO Consulting is led by very experienced hands on civil engineering professionals with a wide range of skills in the industry they are operating in. The Member had previously worked as an executive member in civil engineering consulting and contractor firms.

The Member gained extensive experience in this particular industry, with hands on experience and strategic management experience spanning decades, in that context our clients are in good hands.

The company prides itself for employing only the best technical resources from the built environment industry to provide the best possible service to our clients. Our staff is our most important asset and we recognize that our clients procure our services through trust and confidence in our work. The only way to exceed our client's expectations is in the delivery of good quality products and services.

SPO Consulting has thorough understanding in the consulting engineering space and committed to deliver high level services to its clients. All this can be achieved in confidence as it is strategically aligned with our goals in specialty fields.





## 2. MISSION STATEMENT

SPO Consulting delivers full civil consulting engineering services in its areas of focus. These services range from the traditional feasibility studies, design, tender compilation and project management. The company's mission is to provide sustainable and appropriate technical solutions with a positive social and environmental impact, thus ensuring value for clients and the community.

The long term objective of the company is to grow into a well managed, resourceful consulting engineering entity, offering all services within the built environment. However it is the intention the Member to hand pick only the best available resources from the built environment industry.

This approach is motivated by our objective to provide excellent services to our clients. We don't have to worry about losing business as our clients are of prime importance, thus our objective is to thoroughly satisfy clients requirements in terms of meeting the constraints of quality, time and budget.

We endeavor to constantly and consistently communicate with our clients to ensure that their requirements are being met. We do not believe in "one solution fits all". We tailor make our services to meet our clients specific and unique needs.

We furthermore, believe that our clients, both private and public always work under severe time constraints to meet deadlines. We are always willing to make serious efforts to share this burden with our clients.

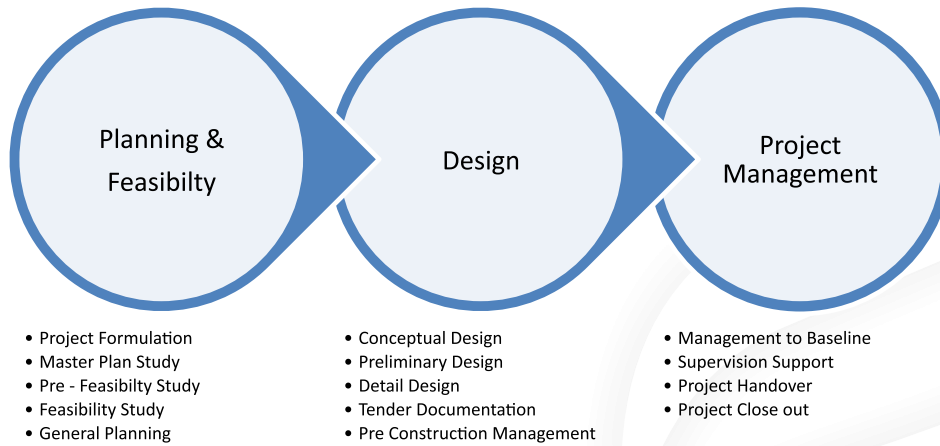
SPO Consulting steers exceptional traits through amongst many others:

- A dedicated and highly motivated team of professionals.
- The application of innovative engineering methods and latest technology in project execution.
- The application of advanced project management principles that ensure timely delivery of high quality services and products.
- Sustainable, value adding solutions in line with the customer's requirements.





## BUSINESS DELIVERY PROCESS



## OVERVIEW

The company member(s), employees and associates have the requisite expertise garnered from years of service in both the Private and Public Sector in all disciplines related to the design, construction/fabrication, maintenance and operation of engineering equipment and systems. Their combined experience in electrical, mechanical and civil & structural projects is summarized as follows:

- Years of experience and active involvement in the planning, design, construction, refurbishment, project management, maintenance and operational activities in Southern Africa.
- Substation automation and control projects.
- Low voltage electrification projects.
- Mechanical System Engineering Projects and /or Services.





- Experience in transport studies and road engineering and/or other paved areas, sewer reticulation networks, portable water reticulation, solid waste management, private developments.

SPO Consulting provides it's Clients with expert engineering advice in the fields of specialization. The company offers a complete service in those fields including the following:

- Feasibility Studies
- Engineering Design and Specification
- Contract Documentation including Bills of Quantities
- Project Supervision and Quality Control
- Project Management



### 3. OBJECTIVES

- SPO Consulting provides services related to land use, planning, civil and transportation ranging from, water ways and water resources.
- SPO Consulting provides construction-related services. In the field of municipal engineering, we provide these services for road design, traffic planning and engineering, water works, waste water systems, sanitary sewer, storm water management, floodplain and control management, and water resources projects.
- SPO Consulting assist communities with Urban Growth Boundary amendments, annexations, plan amendments, and rezoning; social, economic and energy impacts In the Infrastructure Design, SPO Consulting and Project Managers provide Transportation Planning Studies.
- Roadway planning and design & Roadway corridor feasibility analyses and route location studies.
- Intersection and roadway design/ Pavement evaluation and design/Roadway and intersection widening.
- Site grading and retaining structures.
- Hydrology and hydraulic simulations and Design of storm water, retention and conveyance systems.
- SPO Consulting is ready to provide construction staking, observation and full construction management and program management.



#### 4. SERVICES

Service	Description
4.1 Roads	<ul style="list-style-type: none"> <li>• Earthworks, roads and storm water drainage</li> <li>• Freeways</li> <li>• Traffic Engineering</li> <li>• Pavement Management System</li> <li>• Road Rehabilitation</li> <li>• Road Building Material</li> <li>• Asphalt Technology</li> <li>• Labour- intensive methods</li> <li>• Airports and Runways</li> </ul>
4.2 Sanitation	<ul style="list-style-type: none"> <li>• Sewer Reticulation</li> <li>• Sewage Pump Station &amp; Rising Main</li> </ul>
THE SERVICE IN THE WATER RESOURCE ENCOMPASS	
	<ul style="list-style-type: none"> <li>• Water Resource and Water Supply System</li> <li>• Watershed Planning</li> <li>• Hydrologic and Hydraulic Studies</li> <li>• Storm Water Management Master Plan</li> </ul>
4.3 Storm Water, Drainage & Flood Analysis	<ul style="list-style-type: none"> <li>• Storm Water Reticulation</li> <li>• Flood Line Design</li> </ul>
4.4 Water Supply	<ul style="list-style-type: none"> <li>• Hydrology</li> <li>• Pump Station, Pipelines &amp; Reservoir</li> <li>• Water Reticulation</li> <li>• Bulk Water Supply</li> </ul>
4.5 Structural [ Reinforce Concrete Structures]	<ul style="list-style-type: none"> <li>• Buildings</li> <li>• Structural Steel Works</li> <li>• Water Retaining Structures (Reservoirs, dams, etc.)</li> <li>• Bridges</li> <li>• Silos</li> </ul>
4.6 Project Management	<ul style="list-style-type: none"> <li>• Tender documentation and Evaluation</li> <li>• Initial Projects Identification</li> <li>• Investigation</li> </ul>



- Engineering/Technology Solutions
- Pre-Feasibility Studies (Including Financial Model)
- Capital Applications and Approvals EIA Studies
- Project Risk Management
- Scope of Work Identification and Specifications
- Construction Management
- Safety Management
- Quality Management
- Financial Management
- Cost Management
- Project Close-out and guarantee period action
- Labour Intensive Design and Construction Supervision (EPWP)

#### 4.7 Electrical Engineering

- Urban & Rural Reticulation and Electrification Projects
- Power generation and transmission systems (incl. renewable sources of energy e.g. solar energy applications)

#### 4.8 Mechanical Engineering

- HV AC and Refrigeration Systems
- Ventilation Installations
- Fire Protection Installations

### 5. OTHER SERVICES

#### 5.1 Other Services Include Plans and Studies In

- Water System Master Plan
- Waste Water Facility Plans
- Water Quality Studies
- Water Resource and Water Supply Systems
- Watershed Planning
- Hydrologic and Hydraulic Studies





- Drainage Studies, Grading and Erosion Control Plans
- Feasibility Studies and Conceptual Design
- Rates Designs and System Development Charges
- Site Development Survey, Planning and Construction Cost - Estimating, Construction Observation
- Storm Water Management Master Plan
- Bulk electricity supply for townships
- Sub-stations design incl. automation and control industrial sites
- External & Internal Illumination
- Lightning Protection Systems
- Network Protection & Control
- Economic Analysis
- Energy Management
- Compilation of Design Philosophies, Maintenance Procedure & Guidelines
- Electronic Security Systems

## 5.2 Safety Management

- Health and Safety Consulting
- Construction Health and Safety Consulting
- Health and Safety programme development
- Workplace inspections/audits
- Health and Safety hazard and risk assessments
- Contractor management
- Toolbox talks and safety meetings
- Accident/incident investigation and reporting
- Occupational risk assessments
- Emergency response plans
- Permits to work in, and safety checklists, for confined spaces
- Ensuring employer/employee legislative compliance
- Preparation of safety files to client specifications
- Assistance in preparing tender documents (safety returnables)
- Placement of Safety officers on a contract basis
- Monthly reporting



SPO Consulting is striving towards an ambitious long term goal of:

- Being computable within two years of service.
- Being listed in the listed companies on JSE in the next two years.
- 10 year's plans are to mark our presence in the industry and enable competition with big and established companies and improve profit margin rate timely.
- Focusing on growing the asset value of the company, building a strong balance sheet and bringing the business for optimum value at the time.
- Looking forward to be expanded all over nationally and internationally.
- Intentions to assist candidates studying towards engineering qualifications with internships especially on Civil and Structural Engineering.

## 6. OWNERSHIP

THE COMPANY IS 100% BLACK OWNED AND MANAGED

### SHARE HOLDINGS/DIRECTORS

Name	PDI Status	Shareholding
J.M Kasonga [Project]	Yes	100%

### ASSOCIATES

Name	PDI Status	Date of Appointment	Gender
J.Mpumbu [Pr-Tech: 201170359]	Yes	2010	Male
C.Weston [MTech Civil Eng, Msc]	Yes	2010	Male
S.Banza [Pr-Eng: 20110120]	Yes	2010	Male
E.K.Mensah [Bsc Elec, M, Fin]	Yes	2011	Male

### EMPLOYEES

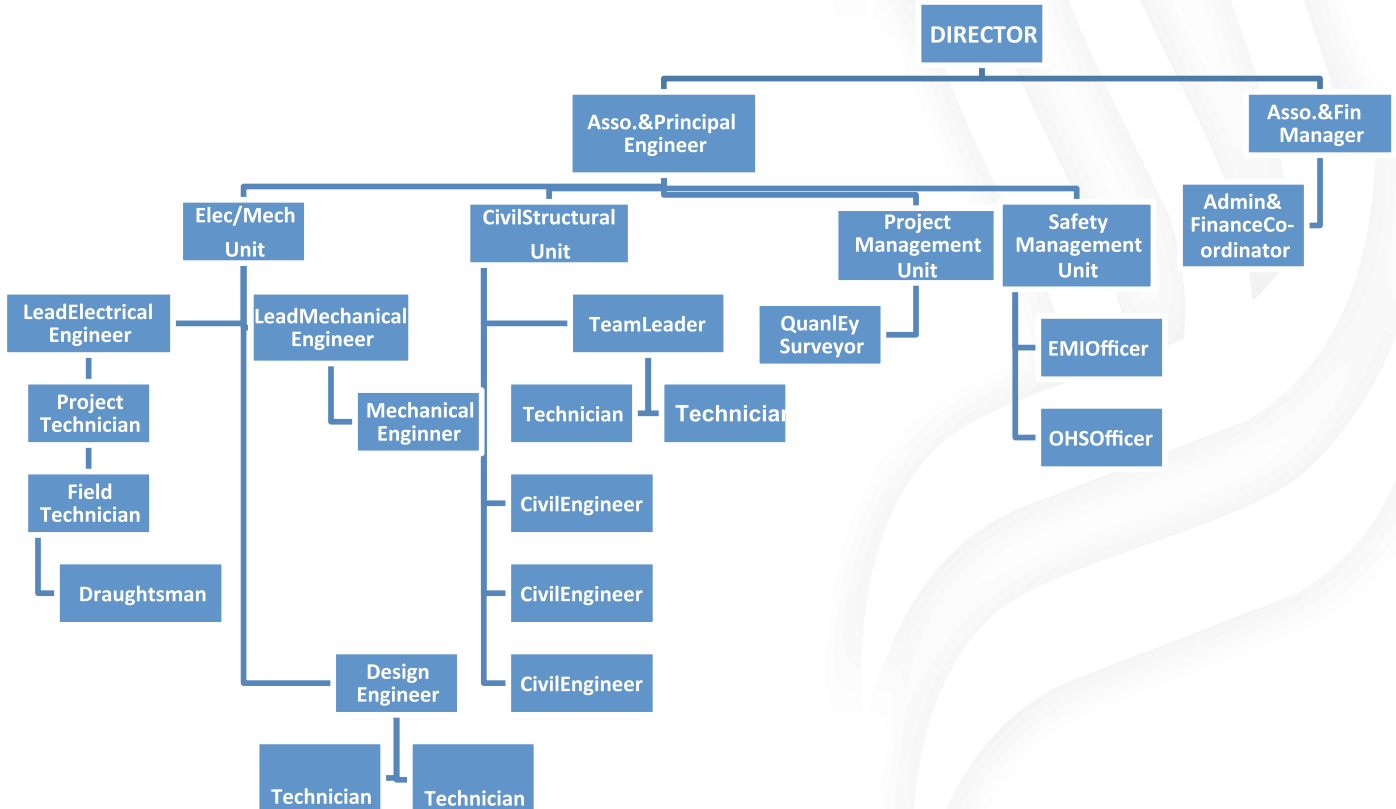
Description	Staff Members
Directors	1
Professional Employed	6
Technical Personnel	11
Non-Technical Personnel	6
Previous Disadvantaged None-Technical Personnel	1
<b>TOTAL</b>	<b>25</b>



Total Staff	Male	Females	P
25	18	7	25
100	72	28	100



## 7. COMPANY STRUCTURE





## 8. COMPANY AFFILIATIONS

The company, its directors and associates are also registered with the following professional bodies:

PIFRS (Indemnity cover)	EC11646
-------------------------	---------

- SAICE : South African Institution of Civil Engineering
- ECSA : Engineering Council of South Africa
- SABTACO : South African Black Technical & Allied Carrier Organization
- SAACE : South African Associate of Consulting Engineers
- IPET : Institute of Professional Engineering Technologists
- SAIOSH : South African Institute of Occupational Safety & Health
- CIDB : Construction Industry Development Board
- NHRBC : National Home Builders Registration Council

*“Each of us is carving  
a stone, erecting a column,  
or cutting a piece of stained in the  
construction of something much  
bigger than ourselves”*

*- Adrienne Clarkson*



## 9. PROJECTS INVOLVED

PREVIOUS PROJECTS INVOLVED					
WORK PERFORMED	CLIENT & CONTACT PERSON	SERVICE OFFERED	PHYSICAL ADDRESS & CONTACT NUMBER	Period / Status	PROJECT VALUE
<b>2012</b>					
Construction of a 3ML/day water treatment plant in Hertzogville	Tokologo Municipality	C	Hertzogville, Free State	<b>Completed</b>	R 14 200 000,00
Upgrading of Sharpeville in Metsimaholo	Sedibeng Municipality Emba Project Management <b>Mkhondo Mundenda</b>	C	Vereeniging in Vaal Triangle Cell: 073 505 2266	<b>2011</b> <b>Completed</b>	R 91 119 419,74
Upgrading of Sewer System in Metsimaholo	Metsimaholo Municipality <b>P.Kangudi</b>	C	Sasolburg Cell: 083 707 7556	<b>2006</b> <b>Completed</b>	R 8 500 000,00
Renovation of cook and bath house at Johannesburg park station	Black Thari Architects(Intersite property management services) <b>J.Mayombo</b>	C	No 68 Thirteen street Park Hurst Cell: 083 414 1688	<b>2008</b> <b>Completed</b>	R 8 800 000,00
Construction of fire station in Embalihle	Black ThariArchitects(Govan Mbeki Local municipality) <b>J.Mayombo</b>	C	No 68 Thirteen street Park Hurst Cell: 083 414 1688	<b>2004</b> <b>Completed</b>	R 6 500 000,00
Namakgale Freedom and Memorial Precinct	Afro Architectural <b>S.Nzembela</b>	C	Unit B1 office @ Nature 500 Botterklapper Pretoria Cell: 082 441 4836	<b>2004</b> <b>Completed</b>	R 10 000 000,00
Project Management for Shama consulting in Newcastle and Maphumulo	Shama consulting <b>Edwin Van Rensburg</b>	C	Suite 21 Office Park , Hospital Street Newcastle Cell: 082 652 5322	<b>2011</b> <b>Completed</b>	R 34 000 000,00



Irrigation system turnkey term contract for Limpopo Department of Agriculture	Department of Agriculture in Limpopo  <b>Mwamusa Maripa</b>	C	41 Biccard street, Polokwane  Tel: 015 29403366 Cell: 071 868 1787	<b>2014</b>  <b>Completed</b>	R 11 000 000,00
Temba Bulk Water Supply-Schedule A (Sub-consultant)	Bodibeng consulting Engineers (For Moretele Municipality) <b>Takalani Raphalalani</b>	C	No 127 Rabe Street Mokopane  Tell: 015 491 8607	<b>2015</b>  <b>Completed</b>	R 29 135 913,27
Temba Bulk Water Supply-Schedule B (Sub-consultant)	Bodibeng consulting Engineers (For Moretele Municipality) <b>Takalani Raphalalani</b>	C	No 127 Rabe Street Mokopane  Tell: 015 491 8607	<b>2015</b>  <b>Completed</b>	R 20 831 342,55
Development of Housing Units in Greater Tzaneen Municipality in Limpopo	Department of COGHSTA in Limpopo Province <b>Alex Motubatse/Mhlongo Martina</b>	C	Tell: 015 284 5459  Cell: 081 066 0184	<b>2015</b>  <b>Completed</b>	R 8 400 000,00
Establishment of a Land Fill Site in Modimolle Local Municipality	Modimolle Local Municipality <b>Edwin M Mogoane</b>	C	O.R Tambo Square, Harry Gwala Street, Modimolle 0510 Tell: 014 718 2000 Cell: 072 555 5551	<b>Current</b>	R 30 000 000,00
Electrical & Mechanical Works at Harmony Depot	PRASA	EM	PRASA Cres- Mr. T. Rambau / 012 656 8179	<b>2012 – 2012 /Completed</b>	R 2 250 000,00
Mpumalanga Health Projects – MBHEJEKA CHC	IDT Mpumalanga	EM	IDT Mpumalanga- Mr. T. Tshabalala / 013 756 5500 or 076 388 1210	<b>2011 – 2013 / Completed</b>	R 4 200 000,00



Electrical, Mechanical & Civil Engineering services for the construction of a new TSC in Kwaggafontein, Elandsdoorn & Leslie for ESKOM	ESKOM (s/consultant to Takgalang Consulting)	E,M&C	Eskom/Takgalang Consulting - Mr. T. Rambau / 012 656 8179	<b>TERMINATED</b>	R 14 200 000,00
				<b>Engineering Completed</b>	PER PROJECT
New upgrades, Additions & Rehabilitation of Schools Programme	IDT LIMPOPO	EC	IDT Limpopo/Joshua Maroge QS - Mr J Maroge / 011 958 0037 or 071 844 6691	<b>Current 8/12 complete Close out March 2016</b>	R 25 000 000,00

- LEGEND**
- E: Electrical**
  - M: Mechanical**
  - C: Civil**
  - PM: Project Management**

## 10. CONCLUSION

SPO consulting is an emerging Consulting Engineering company owned by previously disadvantaged individuals. The company has highly qualified and skilled individuals able to tackle projects at anytime and anywhere within time and budget.



*"It is not the beauty of a building you should look at, it's the construction of the foundation that will stand the test of time"*

*- David Allan Coe*



**HEAD OFFICE**

Building 816/1 Ground Floor  
Hammets Crossing Office Park  
2 Selborne Road  
Fourways, 2191

**LIMPOPO**

18A Hans Van Rensburg Street  
Polokwane  
0699

.....  
Tel : +27 (0) 87 550 0384

Alt : +27 (0) 11 568 1540

Fax: +27 (0) 86 600 2006

Email: [info@spoconsulting.co.za](mailto:info@spoconsulting.co.za)

Web : [www.spoconsulting.co.za](http://www.spoconsulting.co.za)